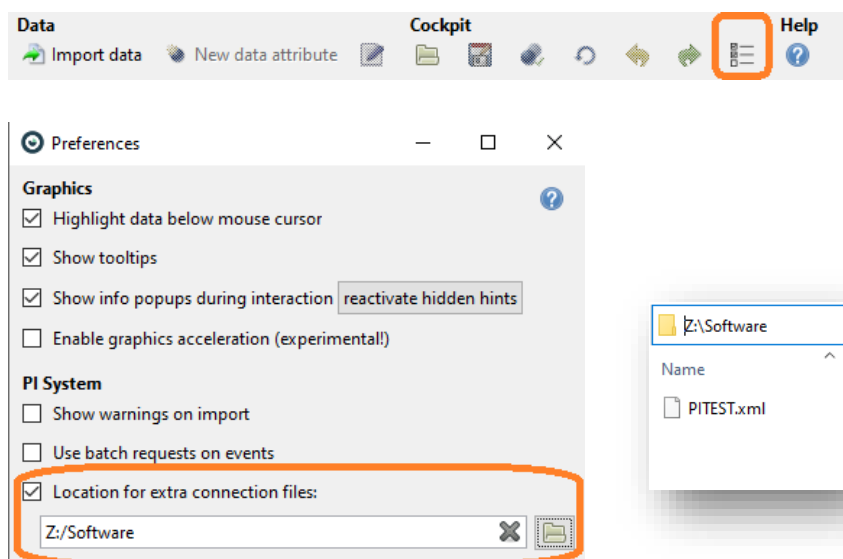


## Where should I put the PI connector config file for Visplore?

There are multiple possibilities where to put your specific xml file for PI access:

- 1) **New:** In Visplore 2021b, it is possible to put this file in a centralized location, for example on a file server, and to access it from there. This allows *maintaining the file only once* for all the clients. To use this option, after installation of 2021b, start Visplore, close the welcome dialog, and open the “Preferences”:



Note: this setting has to be done for each user on a computer that uses Visplore. If all users are using Visplore on the same machine (e.g. Windows Server deployment), option 3 below may be an easy alternative for you, because no per-user settings are involved.

Attention: if you additionally had the file in other locations, like user documents (see 2) or Visplore installation directory (see 3), the connection may be shown twice in Visplore, or problems may arise. So please make sure to move the file away from these locations if you use option (1).

### Other options that are still supported:

- 2) **User directory:** When putting the xml file into the “HistorianSources” subfolder of your Windows user directory, Visplore will *automatically* find it (but of course, **only for this user**). For example (you may need to create the folder *HistorianSources* if not existing):  
C:\Users\<<username>\Documents\Visplore Professional\HistorianSources
- 3) **Installation directory (ideal for Windows Server installations):** When putting the xml file into the “HistorianSources” subfolder of your Visplore installation, Visplore will *automatically* find it. For example:  
C:\Program Files\Visplore Professional\Visplore\HistorianSources  
Note: you can also find the location of Visplore installation by starting Visplore, closing the welcome dialog, then clicking “Help” / “Where is my Visplore installed?”